

## ⚠ Safety Instructions

- If the power cord is damaged, it must be replaced by the manufacturer or its service agent or similarly qualified persons in order to avoid hazard.
- Do not use the appliance with damaged power cord or power plug.
- This appliance can be used by children from 8 years and above and persons with reduced physical, sensory or mental capabilities or lack of experience and knowledge if they have been given supervision or instruction concerning use of the appliance in a safe way and understand hazards involved. Children shall not play with the appliance. Cleaning and user maintenance shall not be made by children unless they are 8 years and above and supervised.
- Keep the appliance and its power cord away from children below 8 years of age.
- Repairs on the appliance may be performed only by authorized specialized dealers or by the factory service. This applies especially for replacement of a damaged power cord. Improper repairs can cause considerable danger for the user. The guarantee also will be canceled.
- Make sure that the machine is cleaned thoroughly before operating according to the instructions in the manual (cleaning and maintenance).
- Do not operate the appliance by means of an external timer or separate remote-control system.
- Disconnect the mains plug in case of a power breakdown to avoid an unintentional restart.
- Disconnect the mains plug in case of faults during use, before cleaning or moving the appliance, and after use.
- Ensure that any plastic wrappings, bags, etc. are kept out of the reach of babies and young children. Danger of suffocation.
- Do not open the appliance. Danger of electric shock.
- Do not immerse appliance in water or other liquids.
- Never pull the plug by the power cord or with wet hands.
- Hold the plug instead of power cord when unplugging the appliance.
- Ensure the lid is closed before starting operation.
- Do not operate the electric kettle without a lid.
- Make sure not to overfill the appliance - boiling water might spill and cause injuries.
- Place the appliance on a plain, heat and water resistant surface.
- Never operate the appliance in hot, very damp or wet environments. Never put the appliance or the power cord on hot surfaces or near open flames.
- Connect the appliance to a grounded socket outlet, and make sure the voltage indicated on the appliance corresponds to your local mains voltage.
- Never carry or pull the appliance by the power cord. Never pull the power cord over sharp edges.
- The power cord shall not be stretched, bent, squeezed, or knotted.
- Use the appliance only together with the supplied base unit. Switch off the appliance before removing it from the base unit.
- The appliance is intended only for heating or boiling of water. To avoid hazardous situations, do not heat other liquids or foodstuffs
- Never switch on the appliance while empty. If the empty electric kettle is switched on accidentally, the overheating protection automatically switches the appliance off. In this case, wait for 15 minutes before filling with water, so that the appliance can cool down.

### Symbols used

- ⚠ Indicates a hazardous situation that could lead to injury or material damage.
- 📖 Please read all instructions carefully before using the appliance, and keep the operating instructions for later use.
- 🕒 Observe the infusion time for your tea.

### Table of contents

Safety Instructions	1
Overview	3
Intended use	3
Delivery content	3
Before first Use	3
Heating Water	4
Brewing Tea	5
Warm-keeping Function	6
Valuable Knowledge for Preparing Tea	7
Cleaning and Maintenance	7
Cleaning	7
Descaling	7
Warranty	8
Conformity Declaration	8
Limitation of liability	8
Technical data	8
Disposal	8

## Overview

### Dear customer,

Congratulation on the purchase of your i-Tea. Please read all instructions carefully before using the appliance, and keep the operating instructions for later use.

### Intended Use

This appliance is intended only for heating of water and for keeping hot beverages warm. Tea can be prepared quickly with the integrated tea strainer and then can be kept warm. The appliance is intended for use in households or similar non-commercial areas like shops, offices, and similar work environments, in agricultural establishments, by customers in hotels, motels, and other typical residential accommodation or in bed and breakfast accommodation. Only use according to these instructions. Improper use is dangerous and will void any warranty claim. Observe the safety instructions.

### Delivery content

- 1 Lid
- 2 Tea strainer
- 3 Water and tea boiler
- 4 Base unit
- 5 ON/OFF
- 6 Lower temperature
- 7 Temperature indication
- 8 Higher temperature
- 9 Keep warm

### Before first Use

Rinse the electric kettle thoroughly. Fill in water up to the MAX mark and let it boil to remove any existing production residue. Then clean the appliance as described in the chapter "Cleaning and Maintenance".



## Heating Water

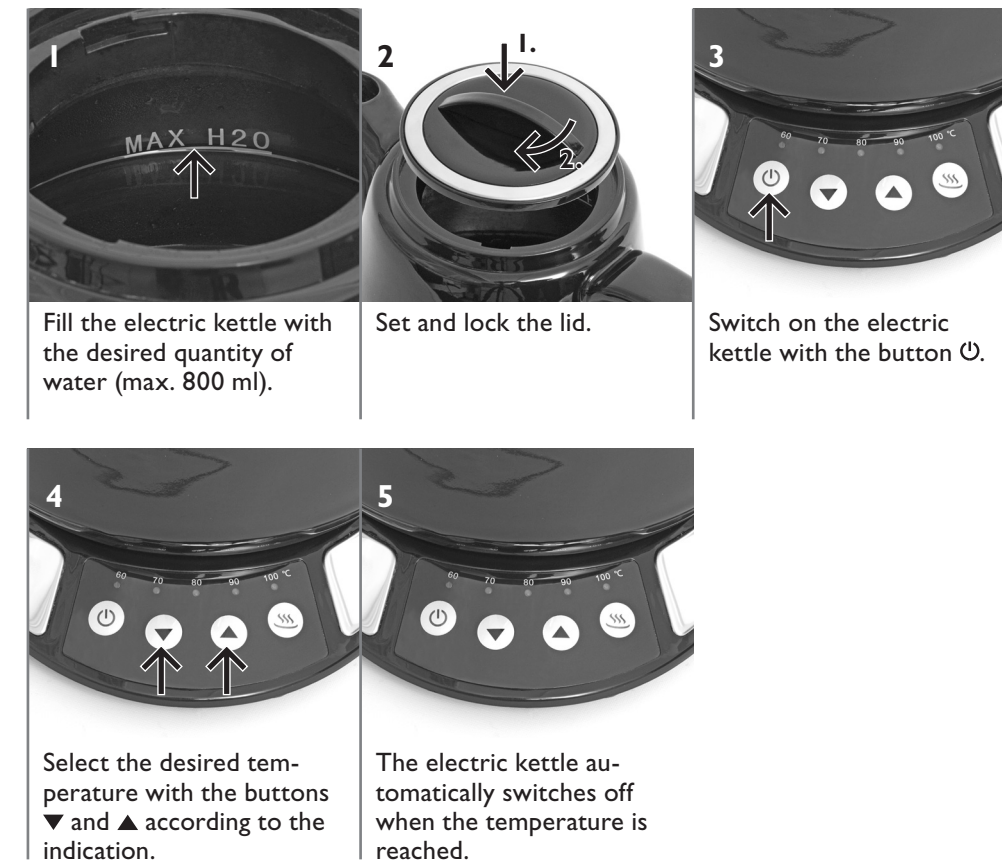
With the i-Tea, you can heat water to temperatures of 60 to 100 °C.

### Notes for Heating Water

- Heating is canceled by early removal of the water and tea boiler from the base unit.
- Heating also is canceled by early switching off ☺.

#### Caution:

Hot steam may exit from the spout. Do not open the lid while pouring.



**BEEM**

Elements of Lifestyle

**BEEM Blitz-Elektro-Erzeugnisse  
Manufaktur Handels-GmbH**

Dieselstrasse 19-21  
61191 Rosbach v.d.H.  
Germany

Email kundenservice@beem.de  
Web www.beem.de  
Tel. +49 (0)60 03-91 13 88 88  
Fax +49 (0)60 03-91 13 99 99

© BEEM GmbH

All rights reserved.  
Reprinting permitted only with  
approval of the publisher.  
Technological changes and  
misprints excluded!



i-Tea\_KE40.00\_V1.0\_K5\_2015-09-16



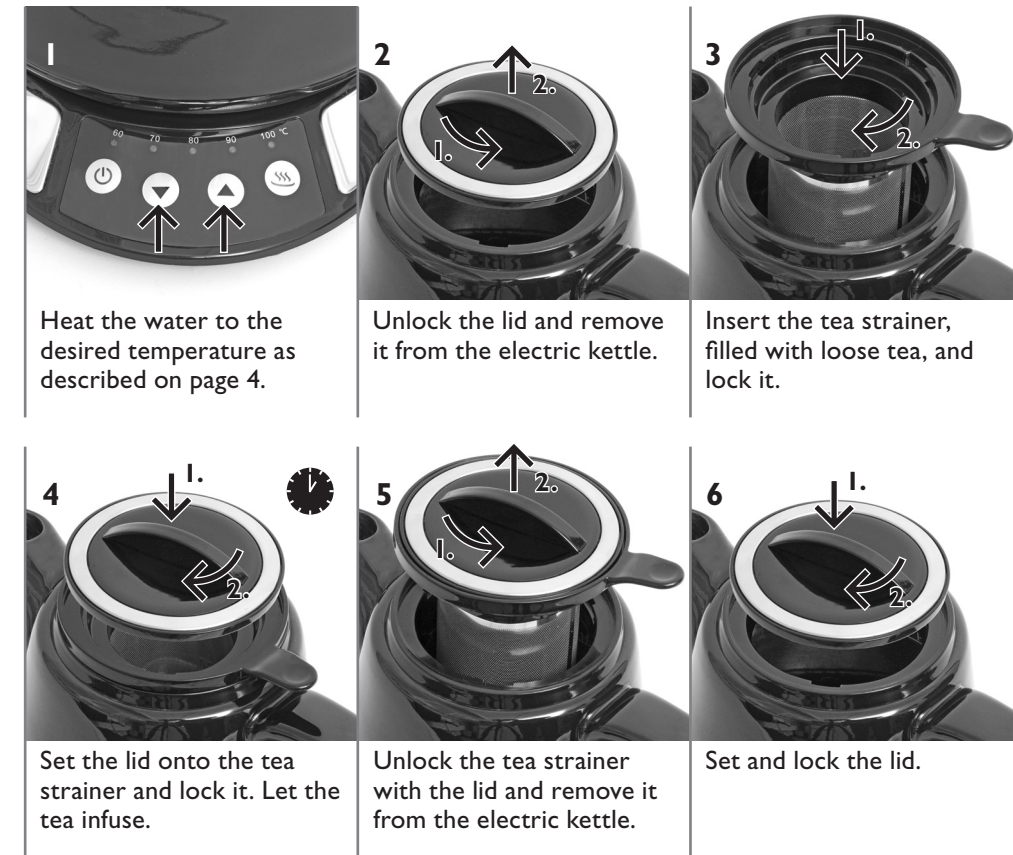
## Brewing Tea

A special feature of the i-Tea is the ability to brew tea at temperatures of 60 to 100 °C.

Tea type	Brewing temperature	Infusion time	Dosing to 800 ml
Black tea	100 °C	3 to 5 min	10 to 12 g
Green tea	70 to 80 °C	1 to 3 min	9 to 10 g
Rooibos tea	100 °C	5 to 7 min	10 to 12 g
Fruit and herb tea	100 °C	5 to 10 min	16 to 28 g

### Caution:

Hot steam may exit from the electric kettle when the lid is opened.



1 Heat the water to the desired temperature as described on page 4.

2 Unlock the lid and remove it from the electric kettle.

3 Insert the tea strainer, filled with loose tea, and lock it.

4 Set the lid onto the tea strainer and lock it. Let the tea infuse.

5 Unlock the tea strainer with the lid and remove it from the electric kettle.

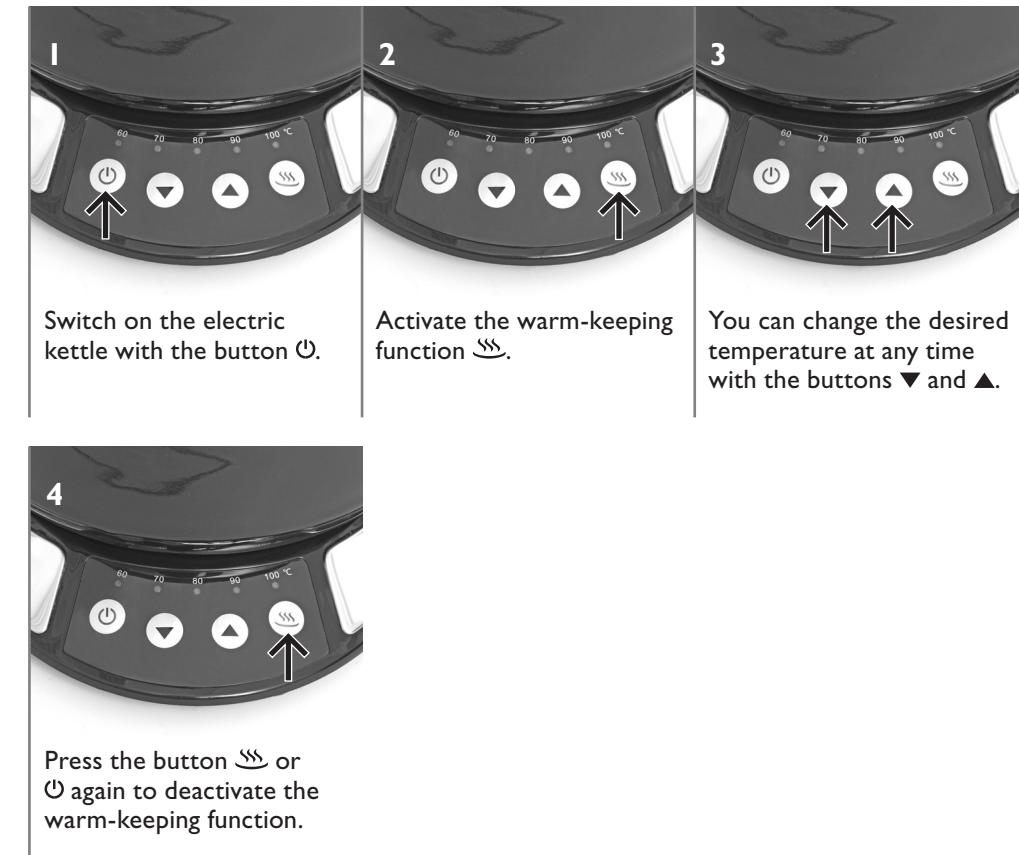
6 Set and lock the lid.

## Warm-keeping Function

The warm-keeping function is suited especially for keeping warm of infusion and hot beverages like tea. The set temperature is maintained for 2 hours.

### Notes for the Warm-keeping Function

- The warm-keeping function is not canceled by removing the water and tea boiler from the base unit.
- The warm-keeping function is canceled automatically after 2 hours.



1 Switch on the electric kettle with the button .

2 Activate the warm-keeping function .

3 You can change the desired temperature at any time with the buttons and .

4 Press the button or again to deactivate the warm-keeping function.

## Valuable Knowledge for Preparing Tea

Tea is a watery infusion of the leaves, buds, blossoms, and stalks of the tea plant *camellia sinensis*. This infusion can be black, green, or white tea. Tea-like products like herb and fruit teas are to be differentiated from them. In order to keep valuable contents and the taste, tea is infused with water of different temperature and is let to infuse for a different time. Black tea is infused with boiling water and left to infuse for 3 to 5 minutes.

Green tea should not be infused with boiling water, as otherwise it will have a slightly bitter taste. Depending on the type of tea, the ideal water temperature for green tea is at 70 to 80 °C. The optimal water temperature should be lower for a higher quality of the green tea. Green tea must infuse for ca. 1 to 3 minutes, while an infusion time of ca. 1 to 1 1/2 minutes is sufficient for high-quality green tea.

Herb, fruit, and root teas are infusion beverages from different parts of various plants. In addition to leaves, buds, blossoms, and stalks, these teas also use fruit, bark, or roots for the infusion. These tea types have different infusion temperatures and times. Please observe the information on the packaging.

## Cleaning and Maintenance

### Cleaning

#### Warning:

Switch off the appliance before cleaning, pull the power plug, and let the appliance cool down.

1. Clean the base unit with a slightly moistened, lint-free cloth. Do not insert it into water.
2. Empty the electric kettle. Remove the lid and possibly the tea strainer and rinse with warm water and detergent.
3. Wipe the outside with a damp cloth. Do not use aggressive detergents.

### Descaling

1. Fill the electric kettle with water and a descaling agent up to the MAX mark.
2. Let the mixture boil and act for approx. 10 minutes.
3. Discard the descaling solution and rinse thoroughly with fresh water.

## Warranty/Guarantee

In addition to the legal guarantee obligation, BEEM provides an additional extended manufacturer warranty for some products. When this has been granted, you can find the corresponding data either on the product-specific packaging, the advertising materials, or on the BEEM website for the respective product. You can find the detailed guarantee and warranty conditions, available accessories and spare parts, as well as operating instructions in various languages on our web page [www.beem.de](http://www.beem.de). Please contact your dealer for warranty conditions, ordering of accessories, or questions concerning services outside of Germany.

## Conformity Declaration

BEEM hereby declares that this appliance complies with the fundamental requirements and other relevant provisions of directives 2004/108/EC, 2006/95/EC, 2009/125/EC, and 2011/65/EU.

## Limitation of liability

We shall not be liable for damages and consequential damages in case of: Failure to observe the instruction manual, use for other than the intended purpose, improper or unsuitable handling, incorrectly performed repairs, unauthorized modifications, use of non-original parts or spare parts, use of unsuitable supplementary or accessory parts.

## Technical data

Model:	i-Tea
Type number:	KE40.001
Weight:	1.6 kg
Dimensions (L x W x H in mm):	180 x 240 x 220 mm
Rated voltage:	220 - 240 V AC
Frequency:	50/60 Hz
Rated power:	1380 to 1630 W

## Disposal

The crossed-out wheeled bin symbol requires separate disposal for waste electrical and electronic equipment (WEEE). Electrical and electronic appliances can contain dangerous and environment-hazardous substances. Do not dispose of this appliance and its packaging in unsorted household waste. Dispose at a registered collection center for waste electrical and electronic equipment. In this way, you contribute to protection of resources and the environment. For further information, please contact your dealer or the local authorities.

## i-Tea

Water and tea boiler

