

## HAND CRANK RECHARGEABLE FM RADIO WITH FLASHLIGHT

Please read the manual before your first use. Keep this manual safe for future reference!

### PRODUCT DESCRIPTION

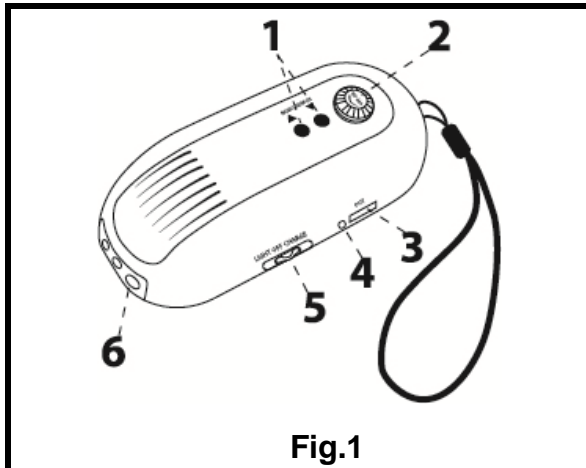


Fig.1

1. Scan button
2. ON/ OFF/ Volume button (Radio)
3. Output USB port (operate as a Back-up powerbank)
4. LED charging indicator
5. Switch to turn ON/ OFF the flashlight and for charging

USB cable (included)

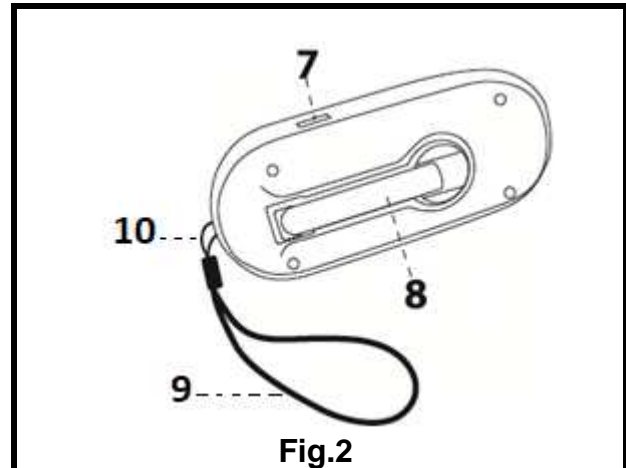


Fig.2

6. LED (x3)
7. Input USB port (charging flashlight/ radio)
8. Crank handle
9. Strap
10. Antenna

Avoid pulling the strap strongly otherwise you may damage the antenna.

### TECHNICAL CHARACTERISTICS

Battery type: Rechargeable battery 18650 lithium-ion, 1500mAh, 3.7V

Input port (charging via USB port of computer): USB port 5 V,300 mA

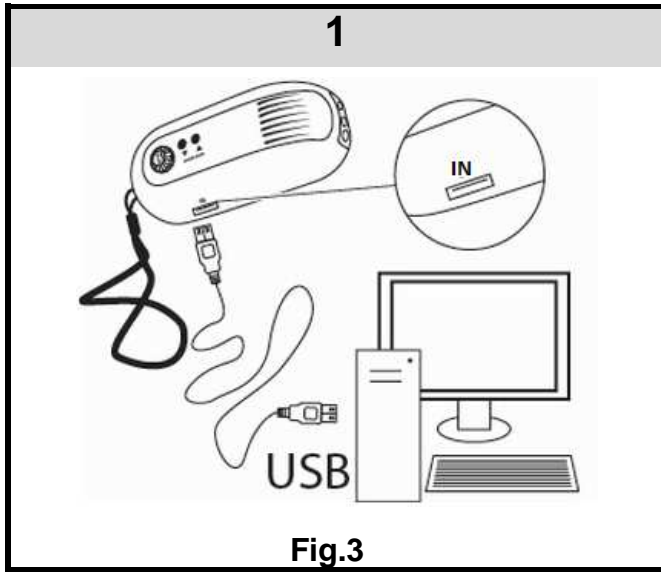
Output port (powerbank): 5 V, 500 mA, max power 2.5W

**3 LEDs:** white LED, 3V, 0,2W each, 20 lumens in total

Frequency band: 88-108Mhz

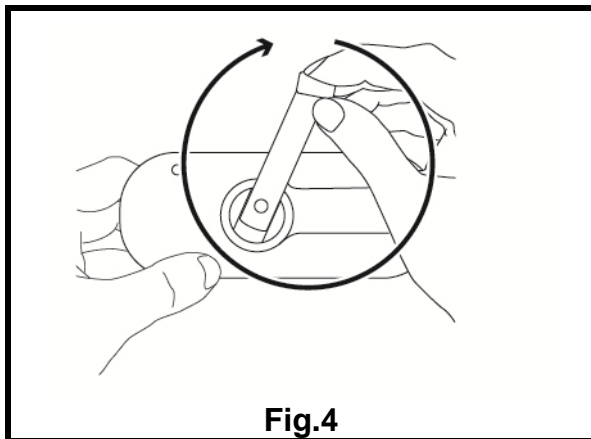
# CHARGING

## 1. CHARGING VIA USB PORT OF COMPUTER



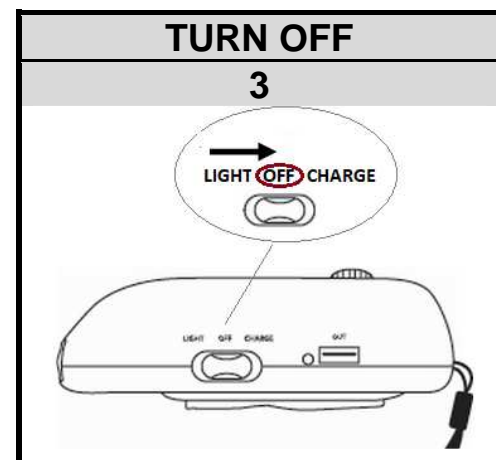
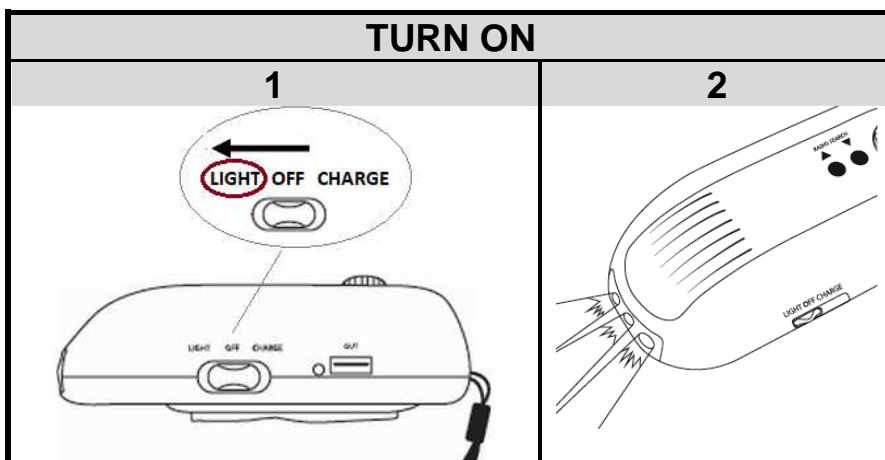
Charging time for full charge: 7 hours

## 2. CRANK HANDLE



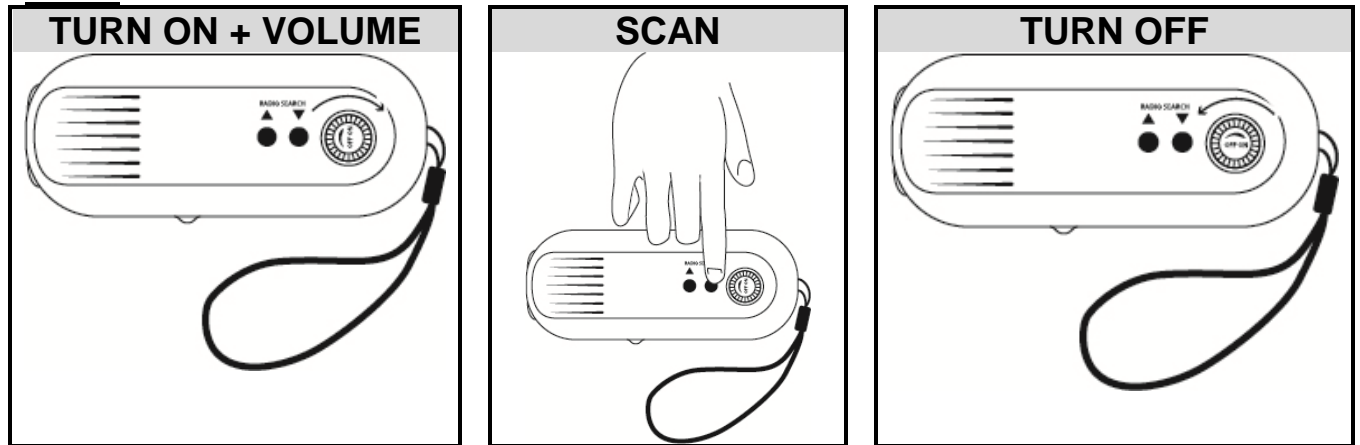
Optimal charging of the hand crank radio with flashlight is achieved when the handle is turned approximately two times per second. One minute of hand crank's turning provides about 10 minutes of power for radio listening and 20 minutes for lighting.

# OPERATION

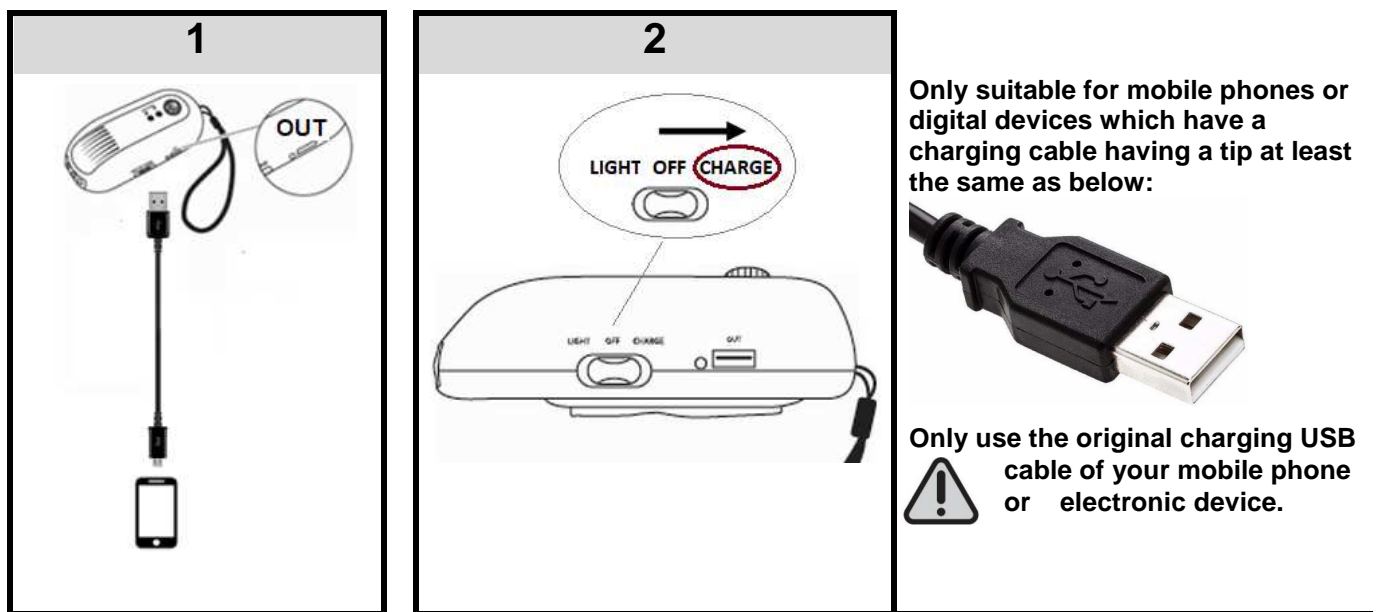


Lighting distance: about 10 meters

## RADIO



## USE AS A BACK-UP POWER BANK TO CHARGE MOBILE PHONE OR OTHER DIGITAL DEVICES



Position the button to "Charge" position. The LED indicator is on. When charging is complete, place the switch to OFF position and disconnect the USB cable.

**Note:** The indicator remains ON from the beginning to the end.

## WARNINGS

- Do not shine light directly into eyes.
- Do not stare directly at the light beam.
- Keep away from sources of heat, direct sunlight, humidity, water or other liquids.
- Do not immerse in water.
- Do not drop, short-circuit, modify, disassemble or puncture it.
- It is not a toy. Keep out of reach of children.
- Do not try to repair your device. All the repairs must be made by a qualified technician.
- Do not disassemble or modify the battery. The battery contains safety and protection devices, which, if damaged, may cause the battery to generate heat, explode or ignite.

**WARNING:** You should not dispose of this device with your household waste. A selective collection system for this type of product is implemented by your local authorities. Please contact your local authorities to find out how and where collection takes place. These restrictions apply because electrical and electronic devices contain dangerous substances that have harmful effects on the environment or on human health and must be recycled.

This symbol indicates that electrical and electronic devices are collected selectively. The symbol shows a waste container crossed out with an X symbol.

Imported by **PRODIS SAS, 1 rue de Rome, 93110 Rosny-sous-Bois, France/ Made in PRC**  
Marketed by **EUROTUPS VERSAND GMBH D-40764 LANGENFELD, Germany**

